

**PRINT ON DEMAND:**

All images in this catalogue are available for Print on Demand. Order any image up to 51" on canvas, fine art paper or quality poster paper.

Our extensive online catalogue is the perfect way to look for art. Start by browsing our website collections and narrow your search by artist, keyword, or subject or size.

You can even create your own PDF Portfolios and send them to our sales team as an inquiry.

Visit [www.wildapple.com](http://www.wildapple.com).



[www.facebook.com/buyart.wildapple](http://www.facebook.com/buyart.wildapple)



[www.instagram.com/wildappleart/](http://www.instagram.com/wildappleart/)



[www.linkedin.com/company/wild-apple-graphics](http://www.linkedin.com/company/wild-apple-graphics)



[www.pinterest.com/wildappleart/](http://www.pinterest.com/wildappleart/)



[twitter.com/wildappletweet](http://twitter.com/wildappletweet)

WILD  APPLE





# graffiti

Ever evolving, urban art and graffiti is making its mark on the home. Bold and daring compositions of street-inspired abstract designs are adding contemporary design and energy to every room in the home. Look for abstract collections and mixed typography to be the focal point for design in years to come.



- 80215 WALL OF LOVE
- 48520 GRAFFITI FREEDOM
- 80210 IVE GOT EVERYTHING
- 62419 CITY GRAFFITI II



NEW ARTIST

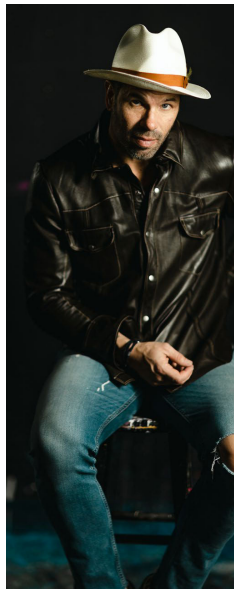
# kent youngstrom

*"As an artist I enjoy the struggle as much as the end product." Kent Youngstrom is an artist with a beautifully varied background from interior design to graphics. His art is a journey combining a touch of faith, sentimental imagery and, every once and a while, a laugh, so that the viewer can experience the same emotional passage.*





A



B

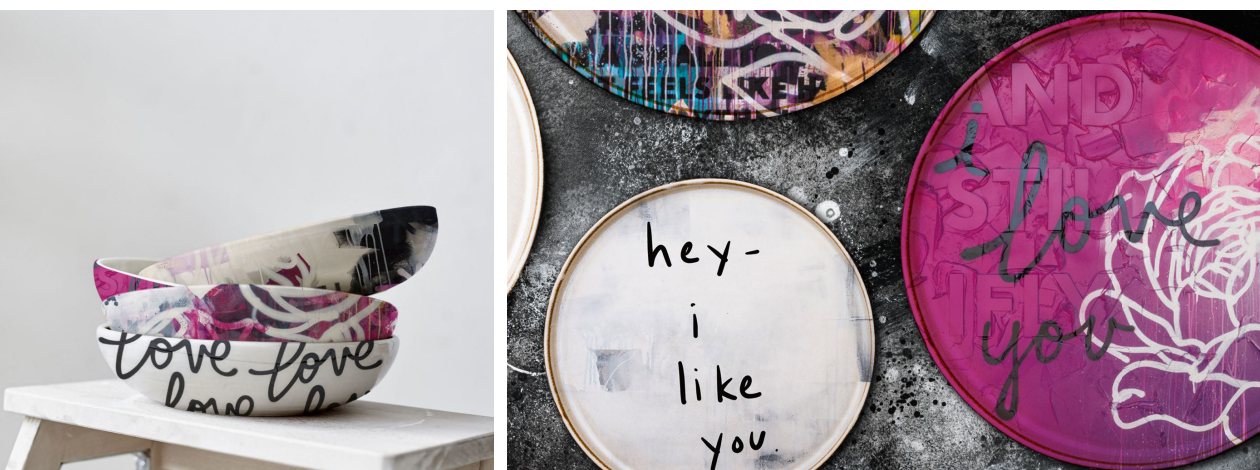
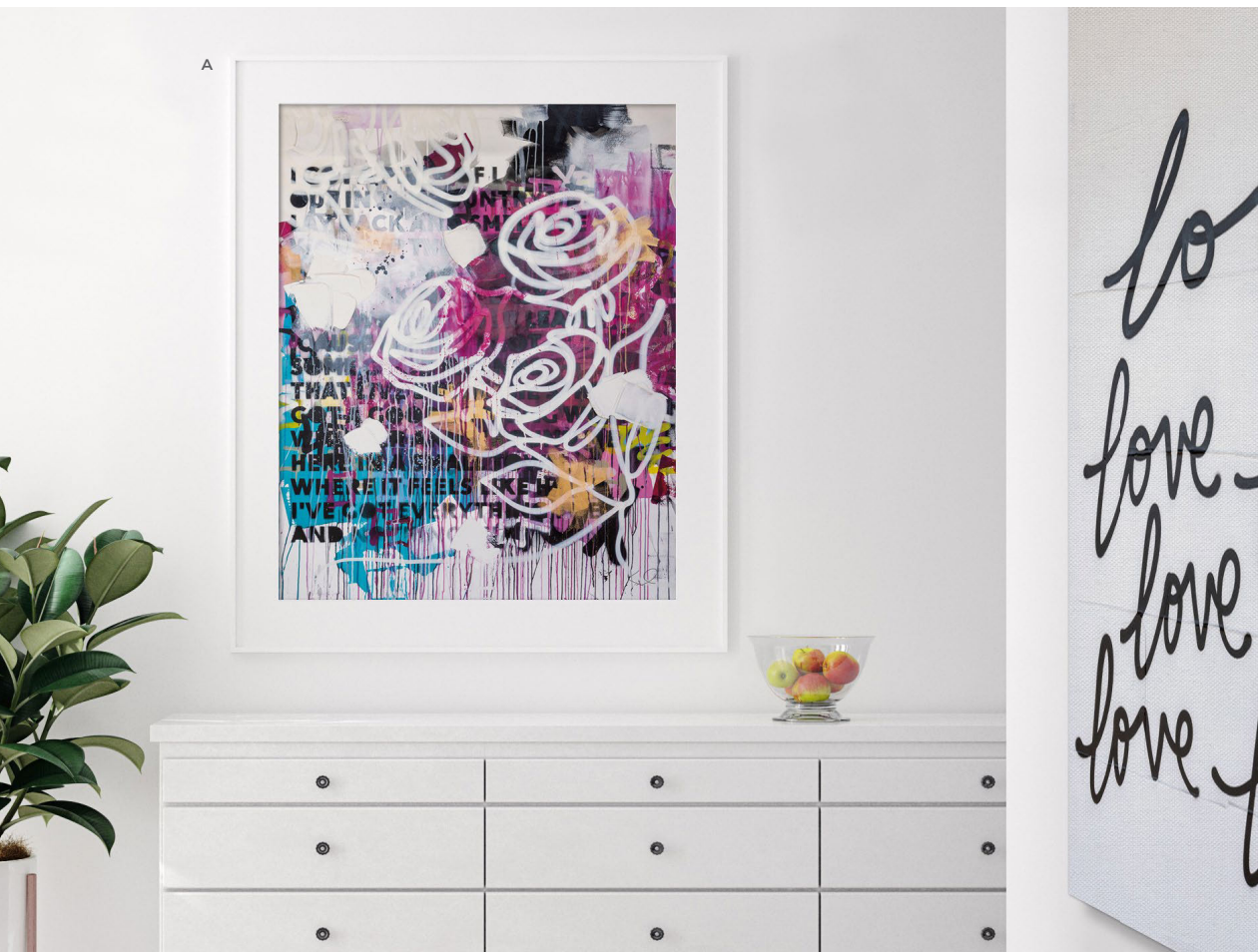


C



A: 80216 WHY SETTLE | B: 80212 NEVER GIVE UP | C: 80215 WALL OF LOVE  
KENT YOUNGSTROM





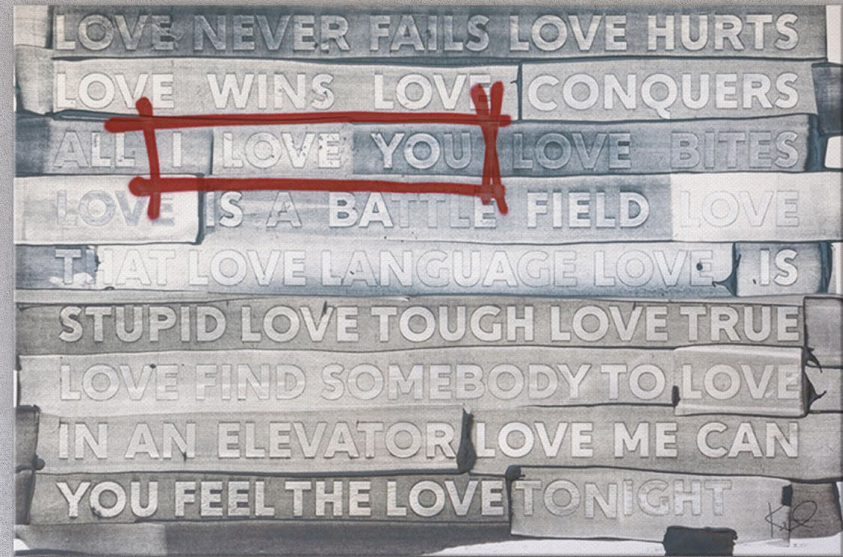
A: 80210 IVE GOT EVERYTHING  
B: 80202 AND STILL I FLY  
C: 80211 LOVE TIMES SEVEN  
KENT YOUNGSTROM

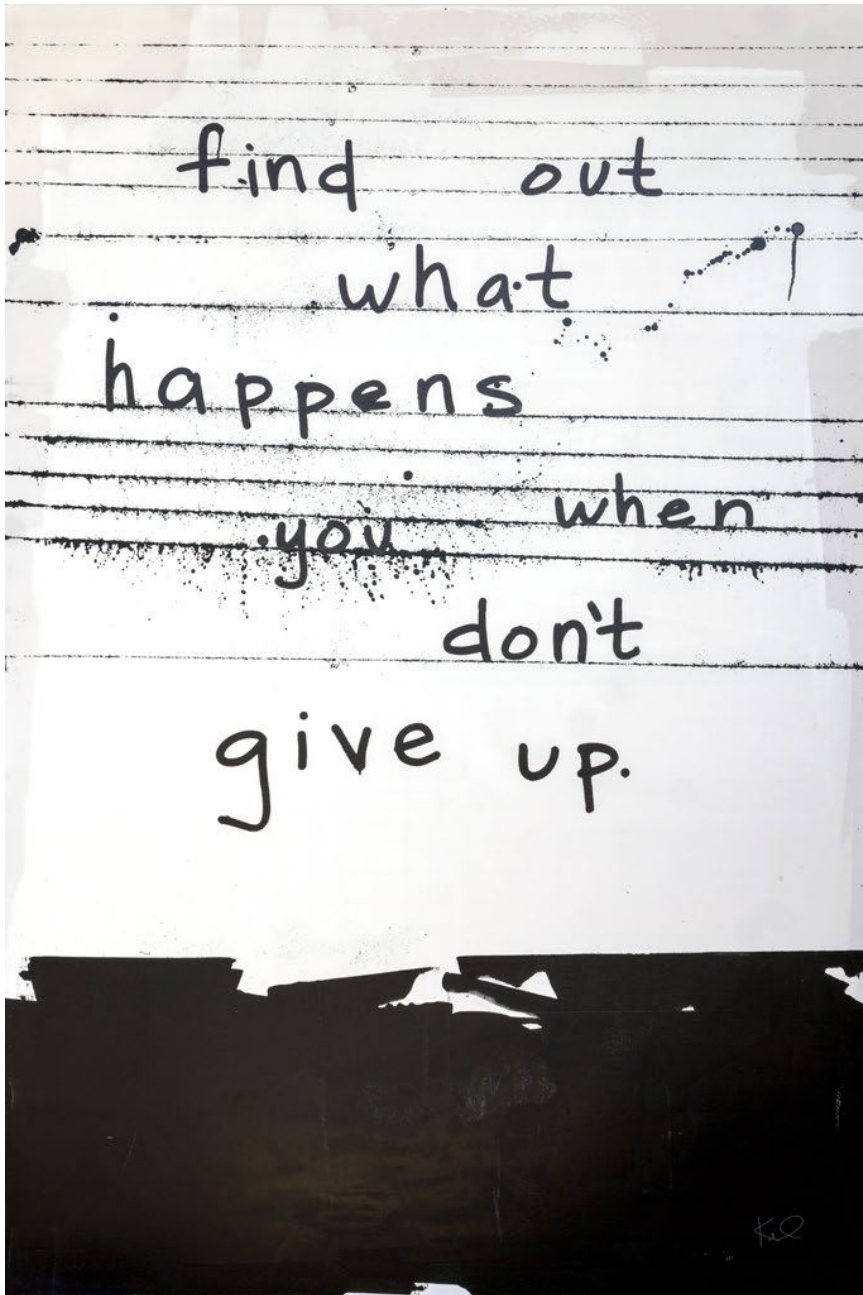




A: 80205 GRAFFITI LOVE SQ | B: 80204 GRAFFITI LOVE  
KENT YOUNGSTROM

B





80203 DONT GIVE UP



80206 HEY I  
KENT YOUNGSTROM



80207 HEY II  
KENT YOUNGSTROM



80208 HEY III  
KENT YOUNGSTROM



80209 HEY IV  
KENT YOUNGSTROM

# simple shapes

Simplicity reigns supreme in the home. Although these pieces look uncomplicated, they are harder to make than they look. It takes an artists' eye and training to create these elegant collections using gestural strokes, texture and monochromatic color stories.



A: 79049 DELIGHTED II | B: 79048 DELIGHTED I  
C: 79050 DELIGHTED III | D: 79051 DELIGHTED IV  
MOIRA HERSHEY







A: 79474 BRUSHED IV | B: 79476 BRUSHED VI  
CHRIS PASCHKE

C: 64355 TRIBECA I | D: 64356 TRIBECA II  
MELISSA AVERINOS





A: 79528 THREADS OF BLUE I | B: 79529 THREADS OF BLUE II  
MERCEDES LOPEZ CHARRO



# just beachy

It can be summer all year round when you decorate with art. New collections of tropical, coastal and beach-themed art are helping us to create coastal getaways in our homes. From palm trees to abstracts and fresh figurative collections, we can't get enough of these beachy scenes.

A: 78875 DARK PALMS II | B: 78874 DARK PALMS I  
CHRIS PASCHKE





A

B

D

A: 79155 DEL MAR SKY I  
B: 79156 DEL MAR SKY II  
SILVIA VASSILEVA

C: 79295 WATER  
D: 79506 EXUDING SUMMER BLUE  
DANHUI NAI





A: 79997 IPANEMA GIRL | B: 79996 MALLORCA GIRL  
MERCEDES LOPEZ CHARRO

C: 79210 BEACHY  
MEGAN GALLAGHER



# wild about art

Art is powerful. We're crazy about adding dynamic color and design to interior spaces with wall decor. Show your wild side with collections of big cats and organic abstracts in exciting colorful color palettes. The look is both soft and bold at the same time, creating gorgeous focal points that everyone will be talking about.

A: 79324 WILD TIGER II | B: 79323 WILD TIGER I  
AIMEE DEL VALLE



ART DECOR



A: 79910 TOGGLE I  
B: 79911 TOGGLE II  
CHERYL WARRICK  
  
C: 79320 WILD LIONESS  
AIMEE DEL VALLE



A: 80041 ORBS I  
B: 80042 ORBS II  
CHERYL WARRICK

C: 79322 TIGER PORTRAIT  
D: 79321 WILD LEOPARD  
AIMEE DEL VALLE





A



B

A: 80051 STRIPES I | B: 80052 STRIPES II  
CHERYL WARRICK

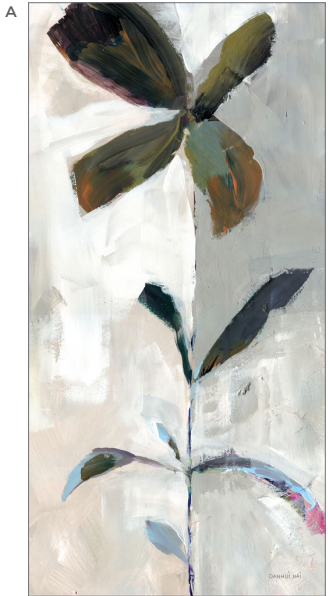


# organic shapes

Bring on the curves and organic shapes. Taking inspiration from nature, our artists are creating new collections of plants, landscapes and abstracts in muted earth tones with hits of black. The overall look is easy to place in the home and a favorite of designers and influencers around the world.



A: 79288 OF CLOVER I  
B: 79289 OF CLOVER II  
DANHUI NAI





A: 74329 DESERT WINDOW I | B: 74330 DESERT WINDOW II  
MOIRA HERSHEY

C: 80192 SLENDER STEMS II TERRACOTTA | D: 79290 SLENDER STEMS I  
DANHUI NAI

E: 79208 MOODY DAY I | F: 79209 MOODY DAY II  
MEGAN GALLACHER



# explore more art

OMAR ESCALANTE



75981 FLOWER POWER II



75980 FLOWER POWER I  
OMAR ESCALANTE

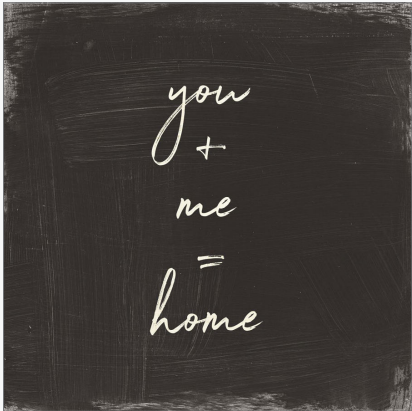


DANHUI NAI



79302 BRIGHTNESS FLOWERING

WILD APPLE PORTFOLIO



48177 MY HOME INSPIRATION I



48178 MY HOME INSPIRATION II



48179 MY HOME INSPIRATION III



48180 MY HOME INSPIRATION IV



CHRIS PASCHKE



73071 CHALKBOARD BRANCH I



73069 WHITE FERN I



73070 WHITE FERN II



73072 CHALKBOARD BRANCH II

CHRIS PASCHKE



78531 PLAIN AND SIMPLE I



78532 PLAIN AND SIMPLE II

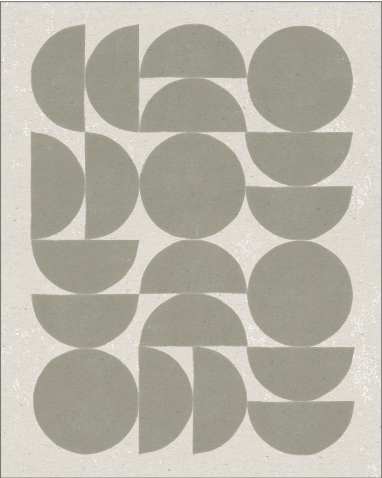


SILVIA VASSILEVA

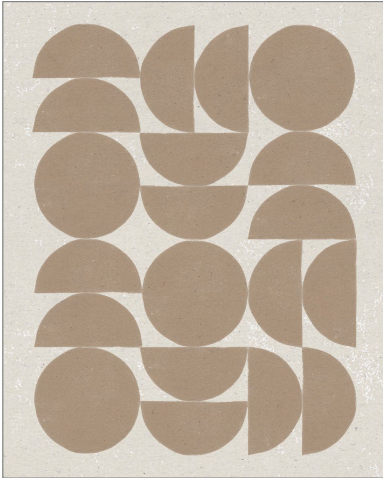


79507 SPRING STREAM NEUTRAL

MOIRA HERSHEY



79064 MAKE IT MOD I



79065 MAKE IT MOD II



moira  
hershey

After graduating from Savannah College of Art and Design with a BFA in Illustration in 2011, Moira Hershey relocated to Vermont to work as a designer and art director at Wild Apple. Her personal style is quirky, cute and fun, with an emphasis on bold lines and texture using gouache, ink, and digital media. She is inspired by nature, Scandinavian design, texture and color.

SEE MORE ART

ART DECOR

LYNN MACK



78189 DAY DREAMING NEUTRAL



78190 MEMORIES NEUTRAL

77107 JANUARY SLOPE | SILVIA VASSILEVA





ART DECOR

CHRIS PASCHKE



79626 TONED TEXTURE I



79628 TONED TEXTURE III

A: 79632 TONED TEXTURE VII  
B: 79633 TONED TEXTURE VIII  
CHRIS PASCHKE



**chris paschke**

*Chris Paschke is an internationally accomplished artist and calligrapher. Her fascination with both Eastern and Western letterforms has been a lifelong study. Chris has studied with European master calligraphers in Belgium, Germany, Austria, and Russia, and after an inspiring visit to China, her work took on a strong Asian influence. For the past forty years, Chris has been strongly influenced by traditional Chinese masters and Japanese Sumi-e painting, crossed with the edgy abstract expressionism of Kline, Pollock, Rothko, Gottlieb, Motherwell and Jasper Johns.*

SEE MORE ART



PAMELA MUNGER



79479 MAY SKY

DANHUI NAI



79293 EARTH

PAMELA MUNGER



79481 SAVE THE DAY

PAMELA MUNGER



79480 LAKE BEACH

PAMELA MUNGER



79317 NOWHERE NEAR

JULIA PURINTON



79249 LAYERS OF RANGE

SILVIA VASSILEVA



79158 APRIL SLOPES



**pamela  
munger**

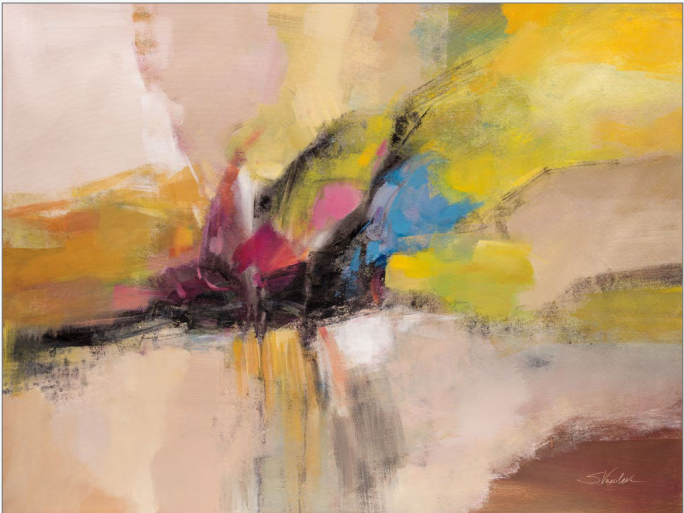
*Pamela Munger grew up in southern California and now calls rural western Colorado home. The big sky, mountains and seasons are a constant inspiration for her. "Painting is a lifeline, combining creativity, solitude and limitless possibilities. I'm all about experimentation with paint, surfaces and subject matter. I like to keep it simple, avoiding detail and not giving away the whole story."*

*Pamela started painting as a creative outlet for her work as an English teacher, which soon grew to a passion. She paints with acrylics, using brushes and palette knives. Pamela and her husband co-own Misty Mountain Hop Farm and she paints full time. If she isn't enjoying the outdoors, you'll find her at her easel.*

SEE MORE ART

ART DECOR

SILVIA VASSILEVA



79157 APRIL SKYLIGHT

SILVIA VASSILEVA



79159 BLOOMING FIELD I



79160 BLOOMING FIELD II



79164 SUMMER PINWHEEL  
SILVIA VASSILEVA





79285 LEVEE  
DANHUI NAI

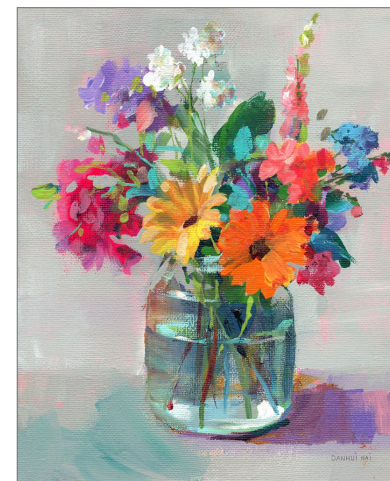


**danhui  
nai**

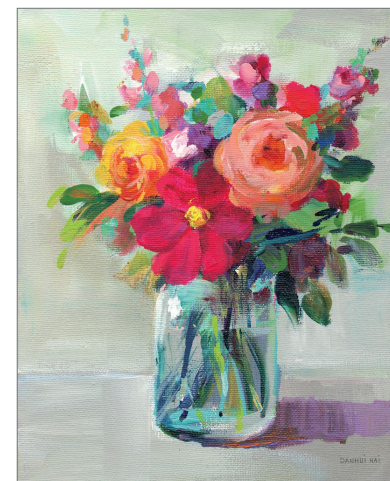
*Danhui Nai was born in mainland China and raised in an artistic household with her sculptor father and painter mother. Her natural passion for art was guided through classical training which she applies in her California studio to create beautiful, on-trend artwork in a variety of media. She studied interior design later in Paris and New York City. She worked in the textile industry in Manhattan, where she continued her studies and artistic development.*

SEE MORE ART

DANHUI NAI



79282 COTTAGE GARDEN BOUQUET I



79283 COTTAGE GARDEN BOUQUET II



PAMELA MUNGER



79318 ORANGE POPPIES

DANHUI NAI

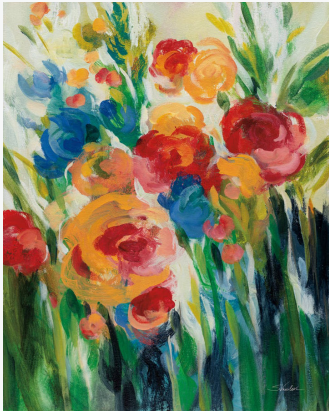


78722 ENGLISH ROSES

SILVIA VASSILEVA



79150 BRIGHT BLOOM I



79151 BRIGHT BLOOM II

CHERYL WARRICK



80049 FLOWER PATCH IV



80047 FLOWER PATCH II



#BUYART



A: 79518 SHOWER OF GOLD III | B: 79519 SHOWER OF GOLD IV | C: 79520 SHOWER OF GOLD V | D: 79521 SHOWER OF GOLD VI  
KATHY FERGUSON



DANHUI NAI

77199 APRIL TULIPS



KATRINA PETE



71247 SUMMER WILDFLOWERS I

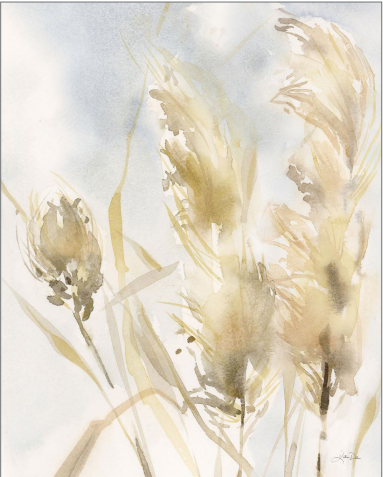


71248 SUMMER WILDFLOWERS II

KATRINA PETE



80057 PAMPAS GRASSES II



80058 PAMPAS GRASSES III

DANHUI NAI



78881 BLUSHING BOUQUET NEUTRAL





79248 AUGUST FIELDS  
JULIA PURINTON

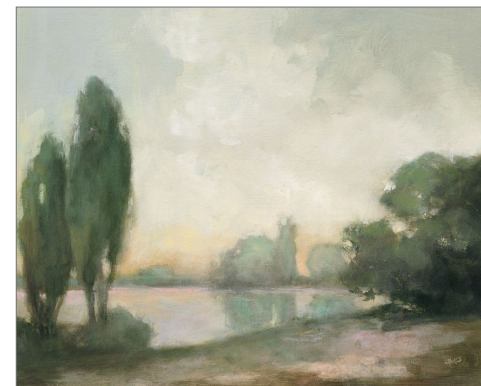


**julia  
purinton**

*Artist and muralist Julia Purinton divides her time between urban Washington, DC and a small rural village in Vermont. Both places provide plenty of material for her evocative landscapes and cityscapes. Working in oils, acrylics, venetian plaster and glaze, Julia's artwork has the luminous glow and vintage romance of images by artists who influence her: William Turner, John Singer Sargent and the Brandywine River School painters. Many layers of glaze create the atmospheric moods of her landscapes. Her work is found in galleries in New England.*

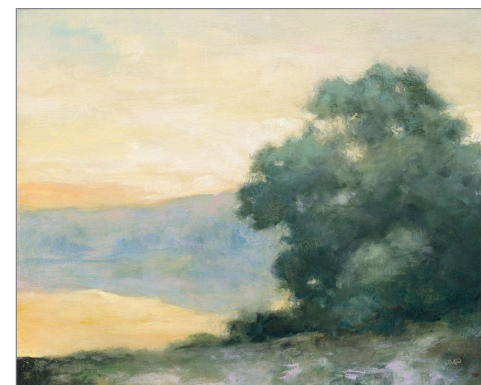
SEE MORE ART

JULIA PURINTON



76011 ESSENCE OF GIVERNY

JULIA PURINTON



76012 THINKING OF LOIRE



ART DECOR

JULIA PURINTON



77399 CLOUDS ON THE MOUNTAIN

SUE SCHLABACH



79251 VIEW FROM ROCK HILL



79250 GOLDEN HOUR  
SUE SCHLABACH

JEANETTE VERTENTES



79994 SHOWTIME

JEANETTE VERTENTES



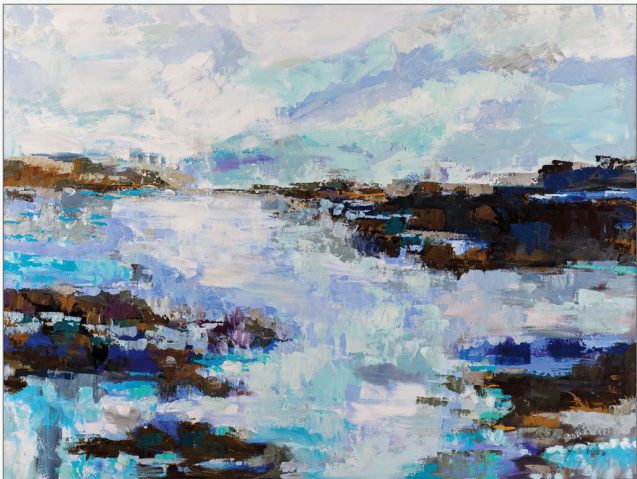
79995 SPIRIT

SILVIA VASSILEVA



79163 OLD PORT REMINISCENCE

JEANETTE VERTENTES



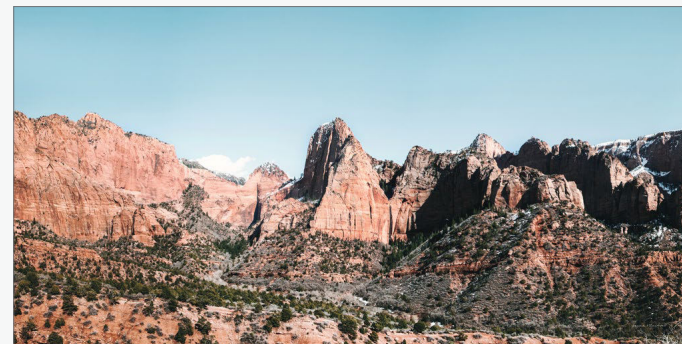
72611 ABSTRACT MARSH





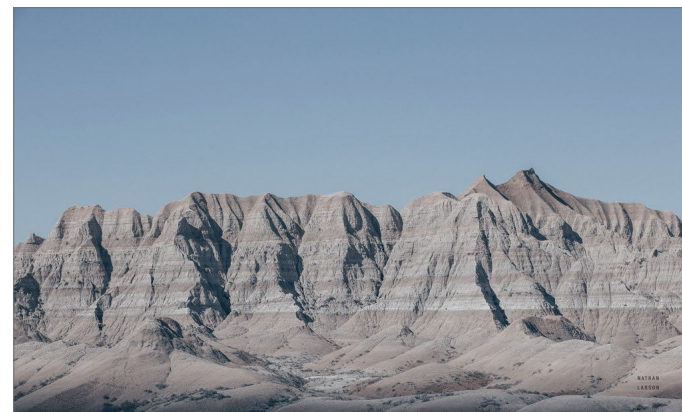
78129 THE WATCHMAN I COLOR  
LAURA MARSHALL

LAURA MARSHALL



78128 KOLOB CANYONS II COLOR

NATHAN LARSON



77272 BADLANDS





79111 HIGHLAND SPRING  
NATHAN LARSON



**nathan  
larson**

*Nathan Larson is a Vermont-based photographer and chocolate consumer. For over 20 years he has created work that ranges from fine art photography to landscapes, abstracts, wildlife, and mixed media. He enjoys collaborating with clients to produce the perfect images for their projects and believes the world is a better place with more art in it. "I still use my first camera, though I have added some tools along the way, and I'm still seeking new ways to share visual stories with my audience."*

SEE MORE ART

NATHAN LARSON



79099 BADLANDS GUARD

NATHAN LARSON



79109 HIGHLAND COW ON WATCH



NATHAN LARSON

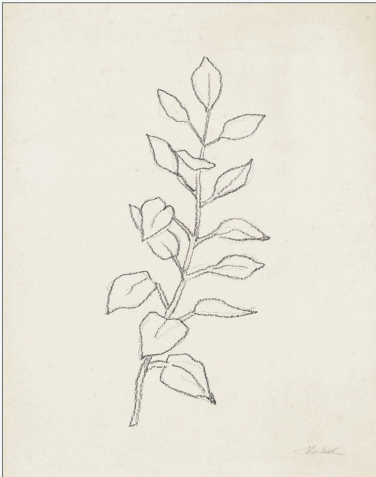


79106 EAGLE PERCH

NATHAN LARSON



79405 SPRING MOON



74417 AUGUST BRANCH I  
SILVIA VASSILEVA



78853 VINTAGE PARIS POSTCARD II  
WILD APPLE PORTFOLIO



78852 VINTAGE PARIS POSTCARD I  
WILD APPLE PORTFOLIO



74418 AUGUST BRANCH II  
SILVIA VASSILEVA

ART DECOR

MICHAEL MULLAN



79443 GREEN HILLS



79451 DOUBLE POODLE PADDLE BOARD



79448 POODLE PIZZA



79449 WHITE POODLE WINERY

RYAN FOWLER



79450 DOUBLE POODLE CANOES  
RYAN FOWLER



# WILD APPLE

800 756 8359 (TOLL FREE IN THE US)  
802 457 3003 (INTERNATIONAL)  
SALES@WILDAPPLE.COM | WWW.WILDAPPLE.COM

ONE LINCOLN CORNERS, SUITE 102  
43 LINCOLN CORNERS WAY  
WOODSTOCK, VT 05091



PROUD MEMBER OF

ART  COPYRIGHT  COALITION  
PROTECTING ART *and* CREATIVITY